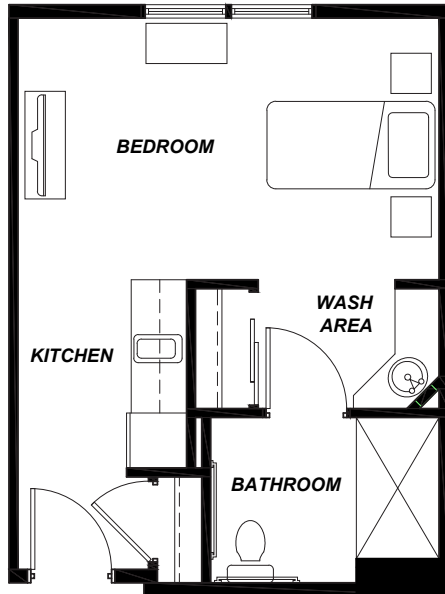


Floor Plans



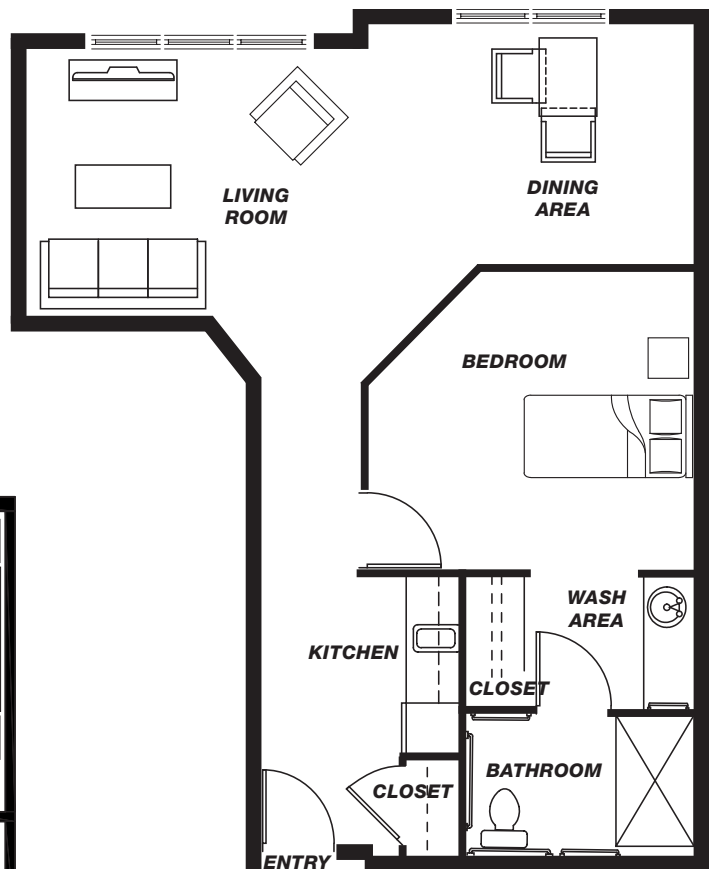
INDEPENDENT &
ASSISTED LIVING
MEMORY CARE

STUDIO S1



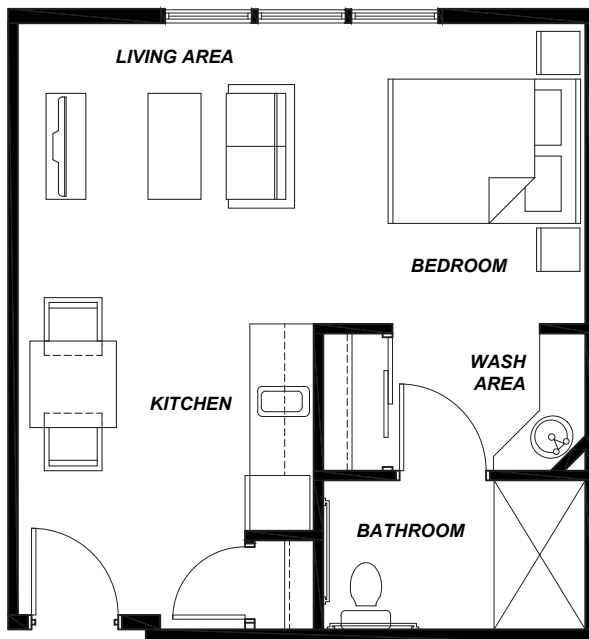
350 SQUARE FEET

ONE BEDROOM B5



763 SQUARE FEET

ALCOVE STUDIO A1



440 SQUARE FEET



AVAMERE
at Hillsboro

2000 SE 30th Ave, Hillsboro, OR 97123

P: 503-693-9944 F: 503-640-6654

AvamereAtHillsboro.com



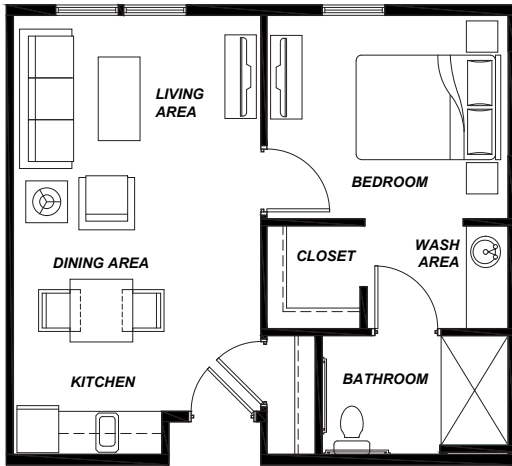
The Avamere Family of Companies complies with applicable federal civil rights laws and does not discriminate on the basis of race, color, national origin, age, sex, or disability in admissions, treatment, or participation in its programs, services, activities or employment practices.

Floor Plans



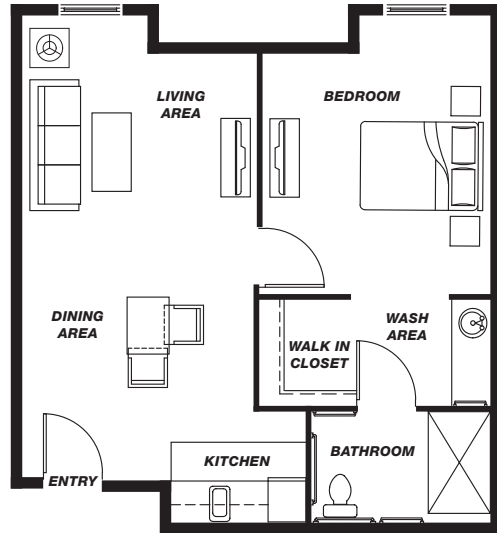
INDEPENDENT &
ASSISTED LIVING
MEMORY CARE

ONE BEDROOM B2



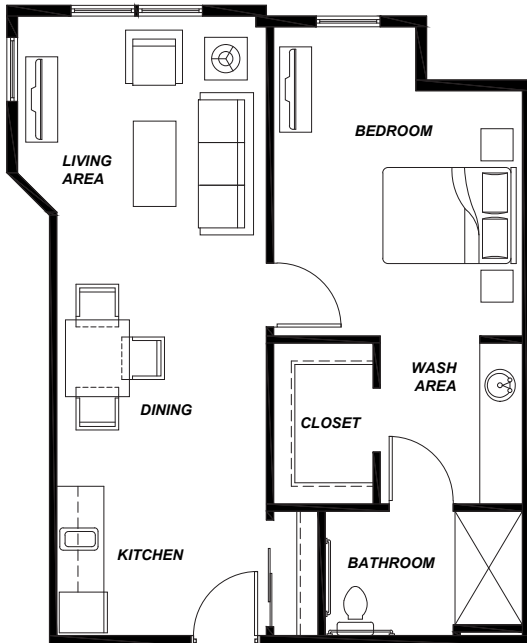
520 SQUARE FEET

ONE BEDROOM B1



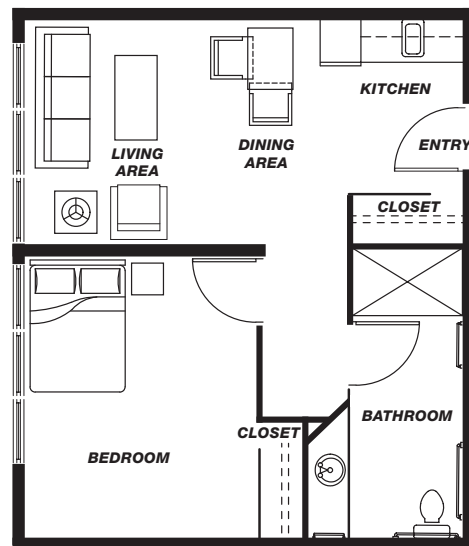
616 SQUARE FEET

ONE BEDROOM B6



667 SQUARE FEET

ONE BEDROOM B7



560 SQUARE FEET



AVAMERE
at Hillsboro

2000 SE 30th Ave, Hillsboro, OR 97123

P: 503-693-9944 F: 503-640-6654

AvamereAtHillsboro.com

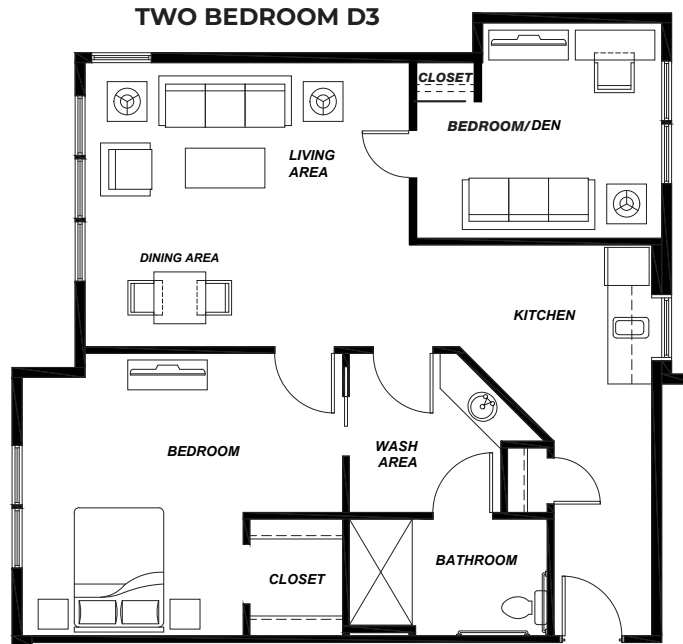


The Avamere Family of Companies complies with applicable federal civil rights laws and does not discriminate on the basis of race, color, national origin, age, sex, or disability in admissions, treatment, or participation in its programs, services, activities or employment practices.

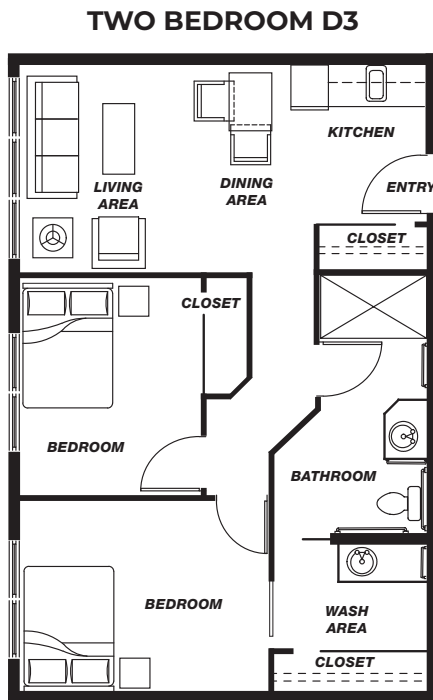
Floor Plans



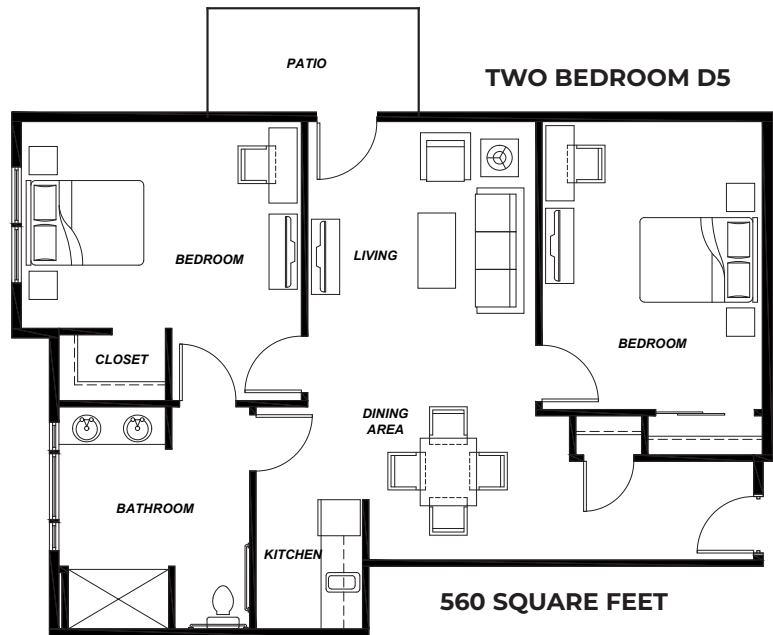
INDEPENDENT &
ASSISTED LIVING
MEMORY CARE



945 SQUARE FEET



726 SQUARE FEET



560 SQUARE FEET



AVAMERE
at Hillsboro

2000 SE 30th Ave, Hillsboro, OR 97123
P: 503-693-9944 F: 503-640-6654
AvamereAtHillsboro.com

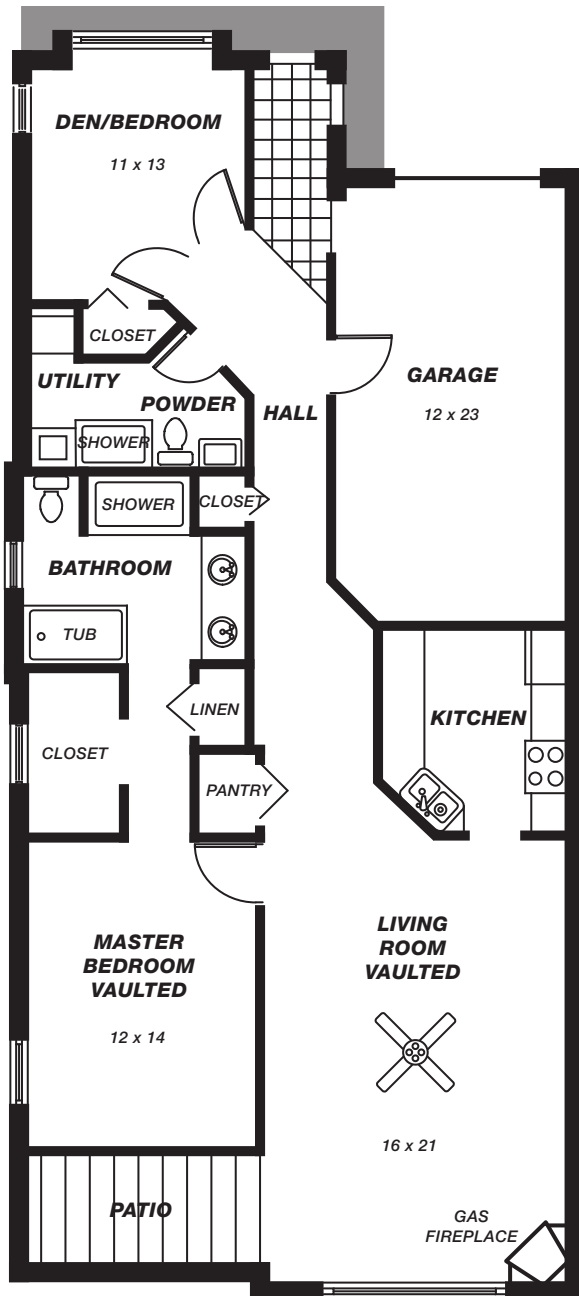


The Avamere Family of Companies complies with applicable federal civil rights laws and does not discriminate on the basis of race, color, national origin, age, sex, or disability in admissions, treatment, or participation in its programs, services, activities or employment practices.

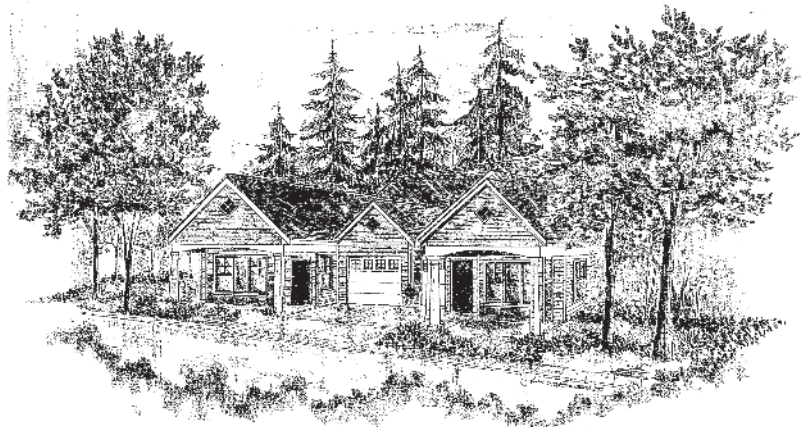
Floor Plans



INDEPENDENT &
ASSISTED LIVING
MEMORY CARE



1300 SQFT. TWO BEDROOM COTTAGE



AVAMERE
at Hillsboro

2000 SE 30th Ave, Hillsboro, OR 97123

P: 503-693-9944 **F:** 503-640-6654

AvamereAtHillsboro.com



The Avamere Family of Companies complies with applicable federal civil rights laws and does not discriminate on the basis of race, color, national origin, age, sex, or disability in admissions, treatment, or participation in its programs, services, activities or employment practices.